

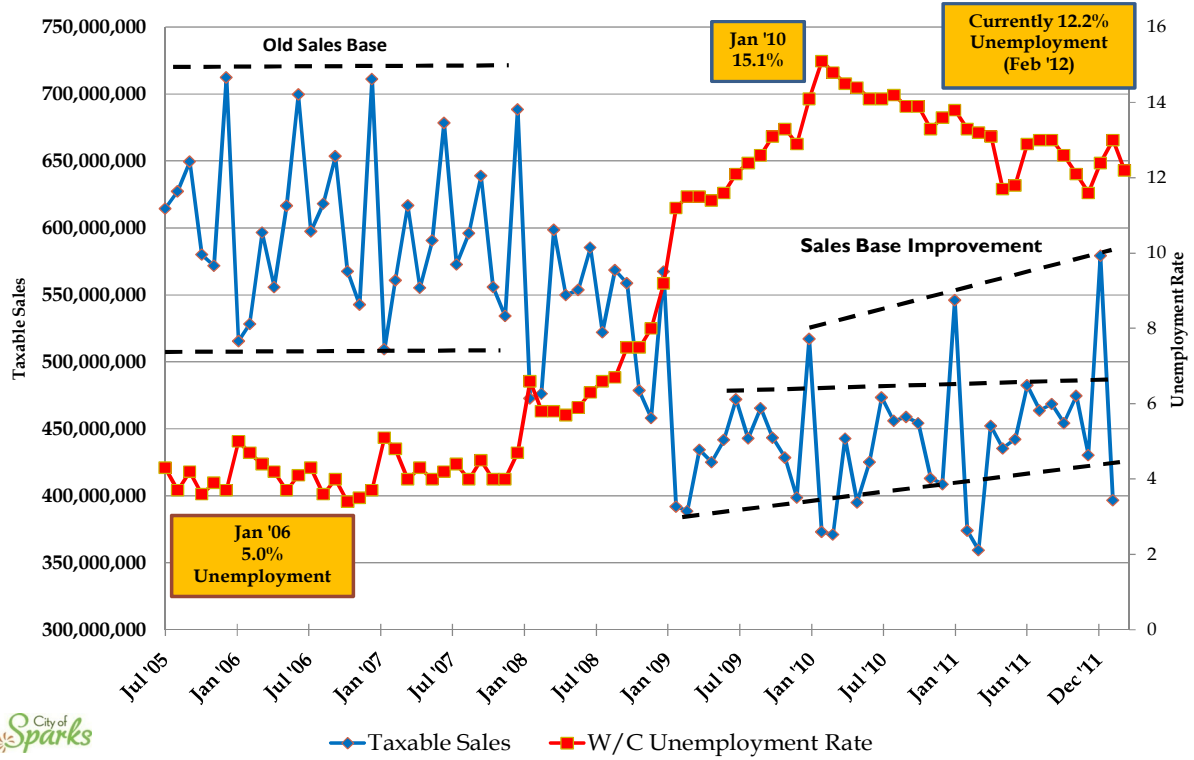
September 18, 2012

# City of Sparks

## ENVIRONMENTAL SCAN 2012



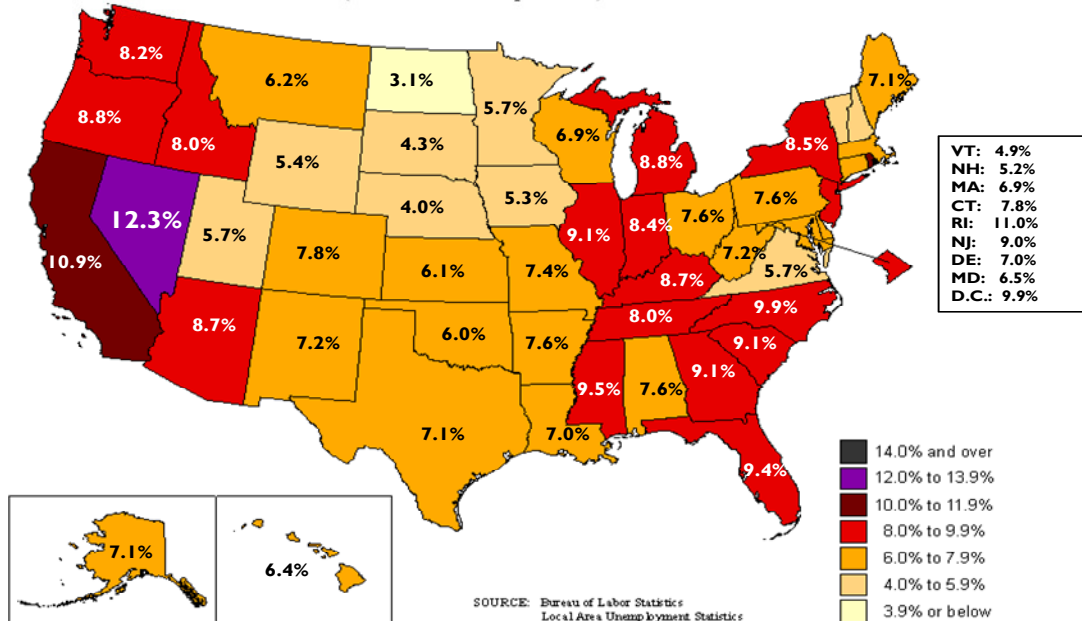
### Washoe County Taxable Sales & Unemployment Rate July 2005 Through February 2012



— Taxable Sales — W/C Unemployment Rate

### Unemployment rates by state, seasonally adjusted, February 2012

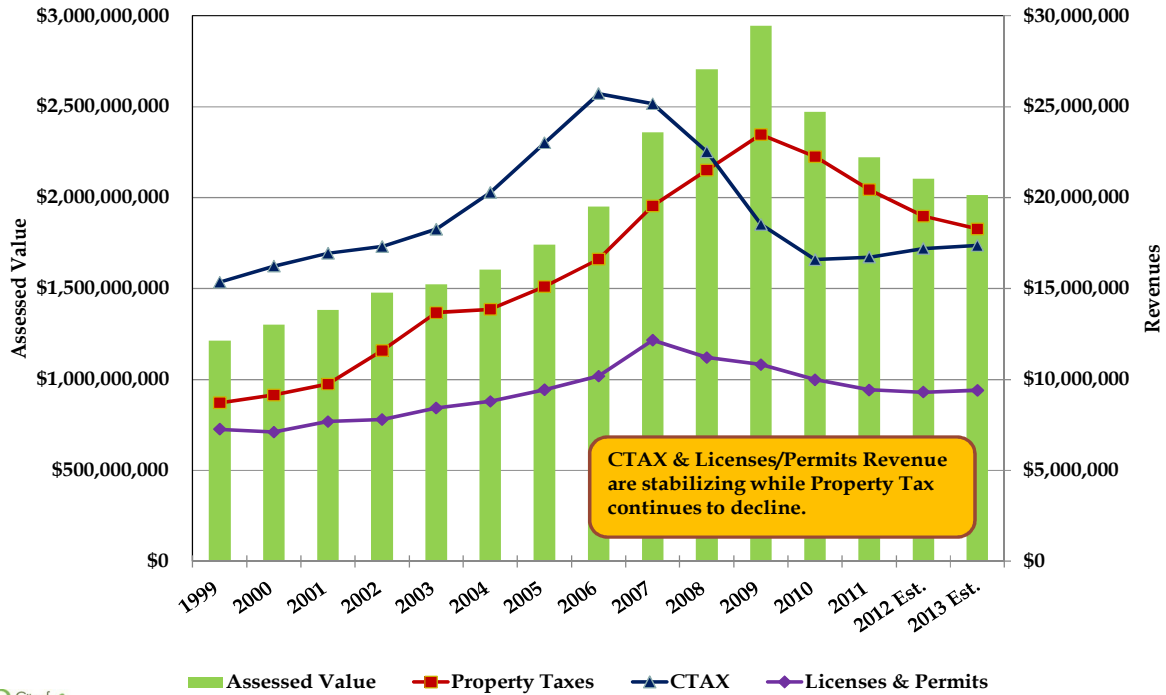
(U.S. rate = 8.3 percent)



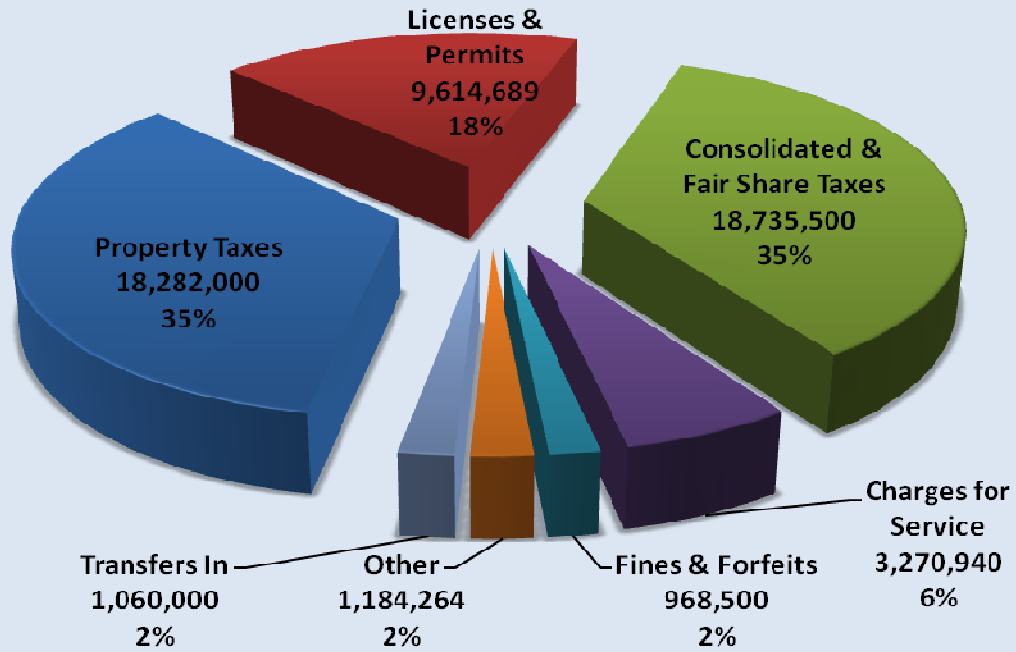
SOURCE: Bureau of Labor Statistics  
Local Area Unemployment Statistics



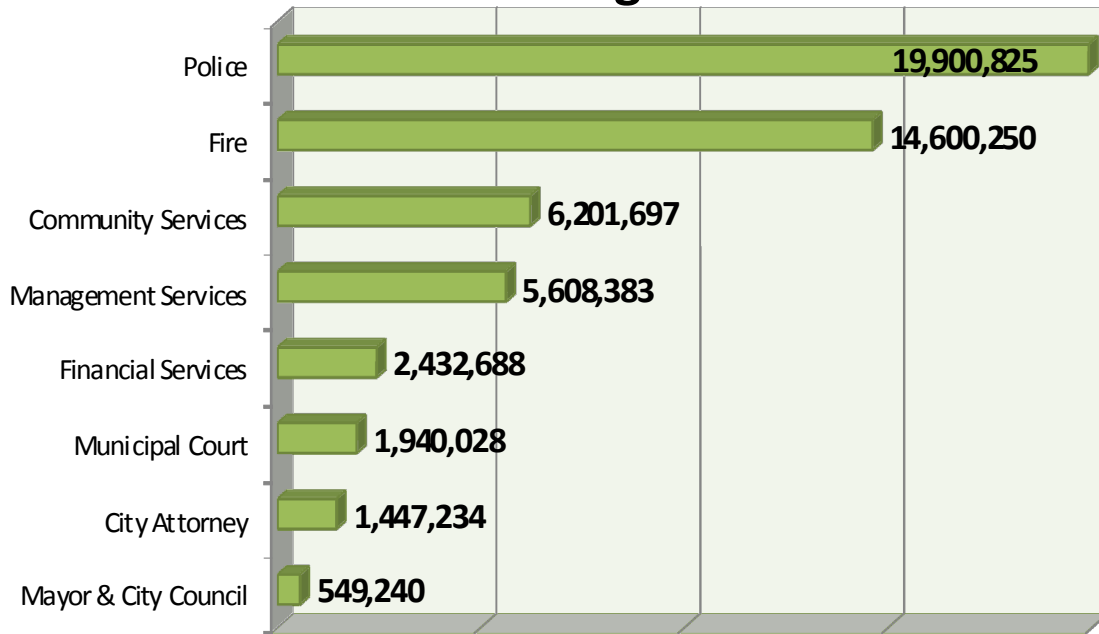
### Sparks General Fund Primary Revenue Sources & Assessed Valuation Since 1999



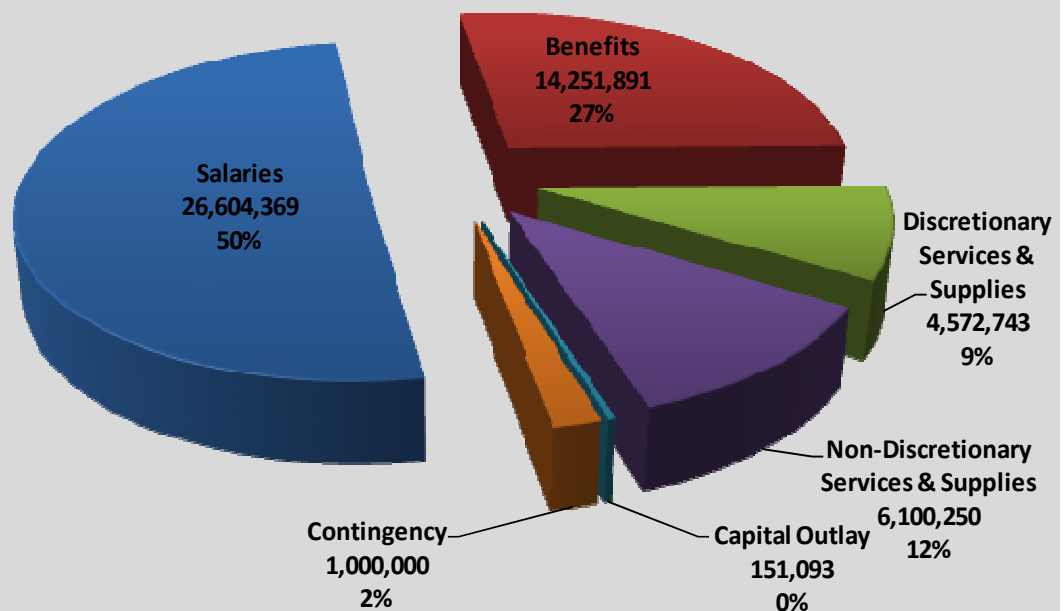
### General Fund Revenues FY13 Budget

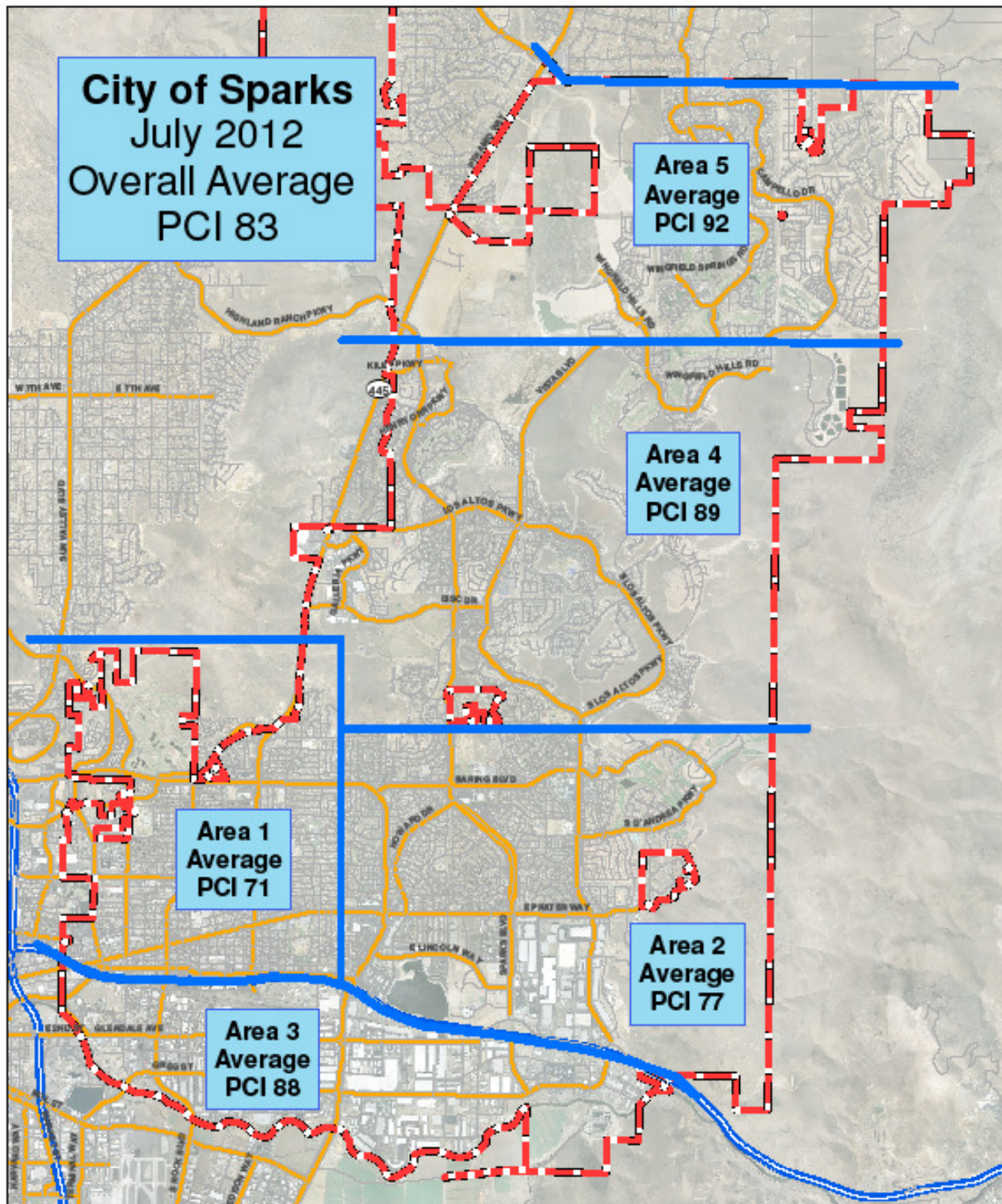


## General Fund Expenditures by Department FY13 Budget



## General Fund Expenditures by Type FY13 Budget

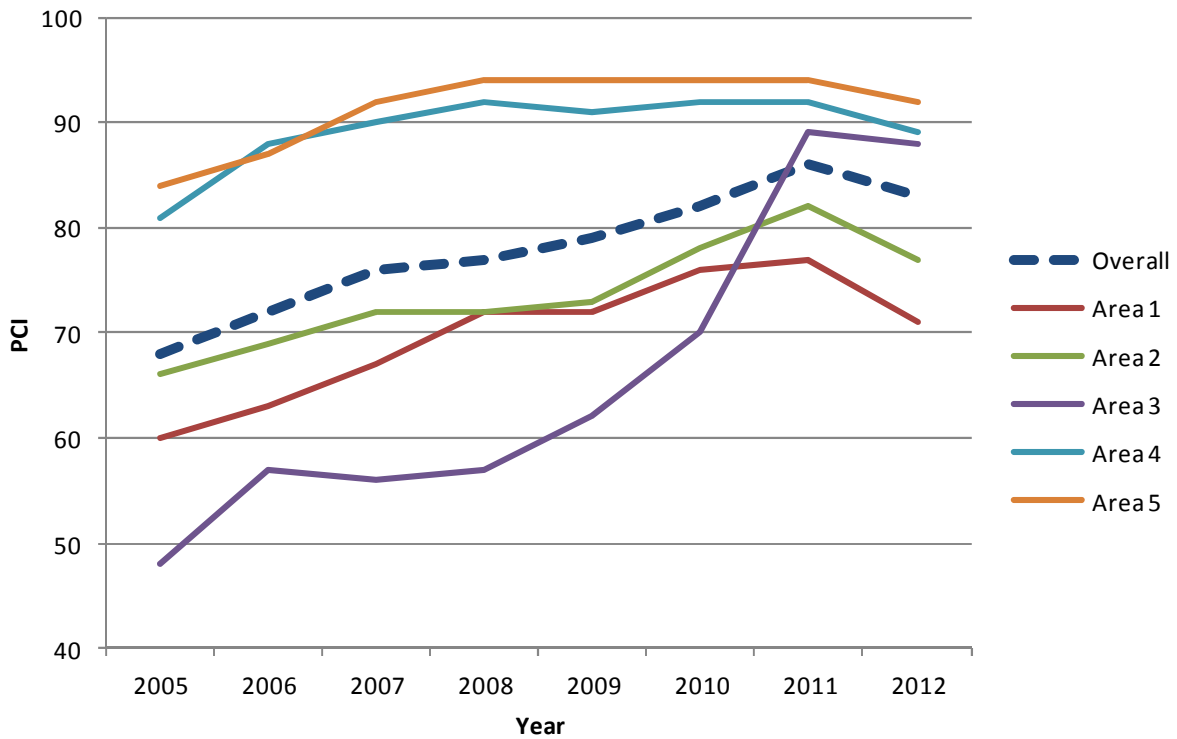




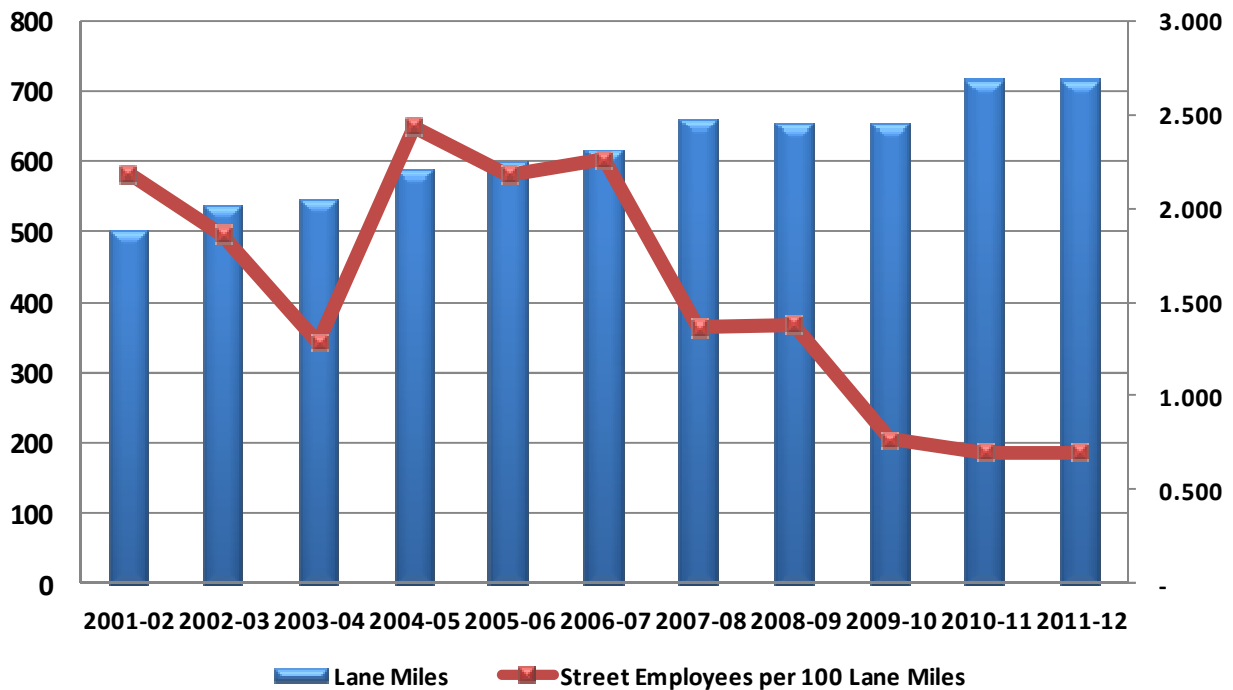
NOTE: The scale and configuration of all information shown hereon are approximate only and are NOT intended as a guide for design or survey work. Reproduction is NOT permitted without prior written permission from the City of Sparks Geospatial Technologies Office.

1 Inch = 5,207 feet

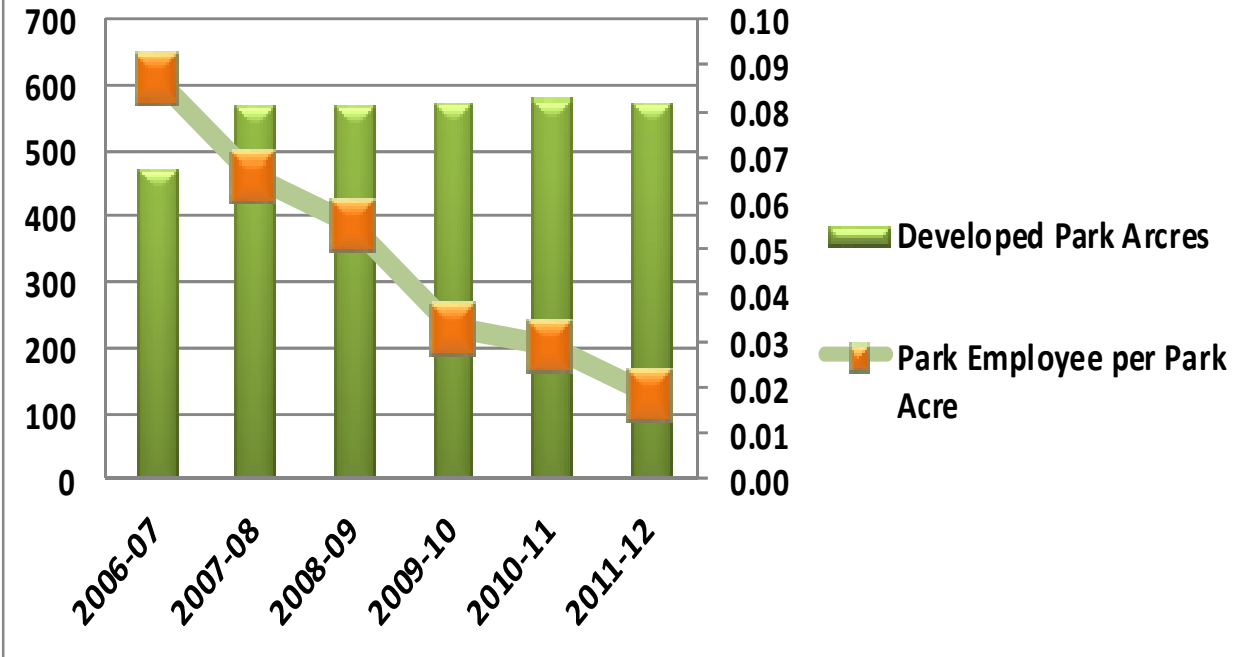
### Pavement Condition Index (PCI) vs Year



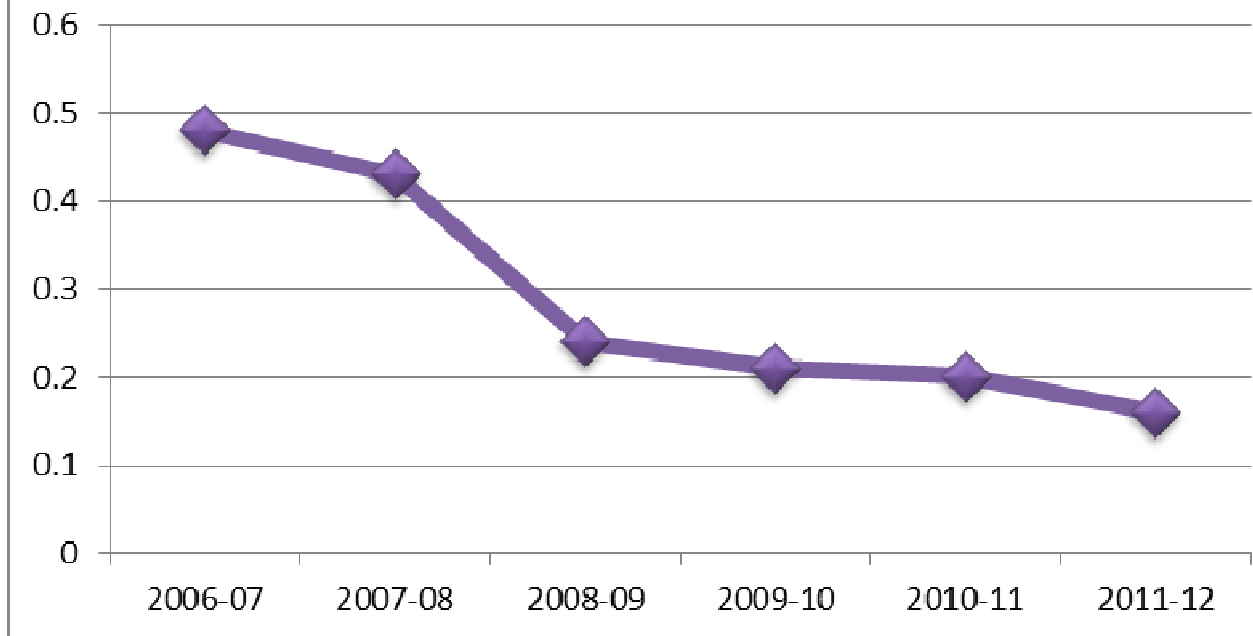
### Sparks Lane Miles to Street Workers



### Ratio of Developed Park Acres to Park Employees

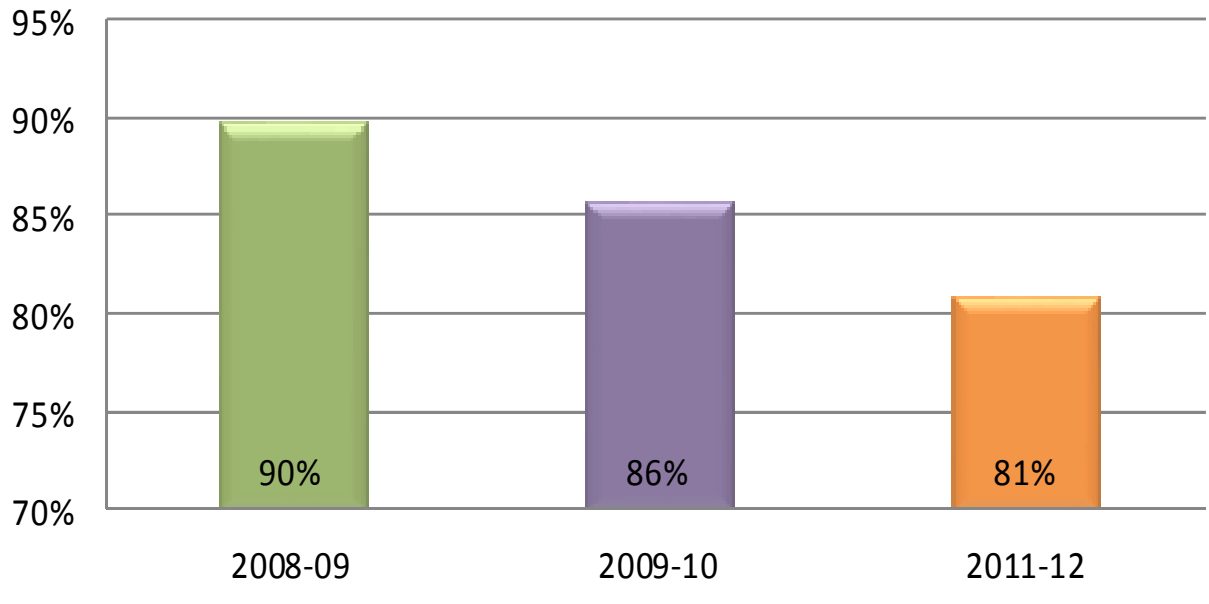


### Parks Employees per 1,000 Citizens

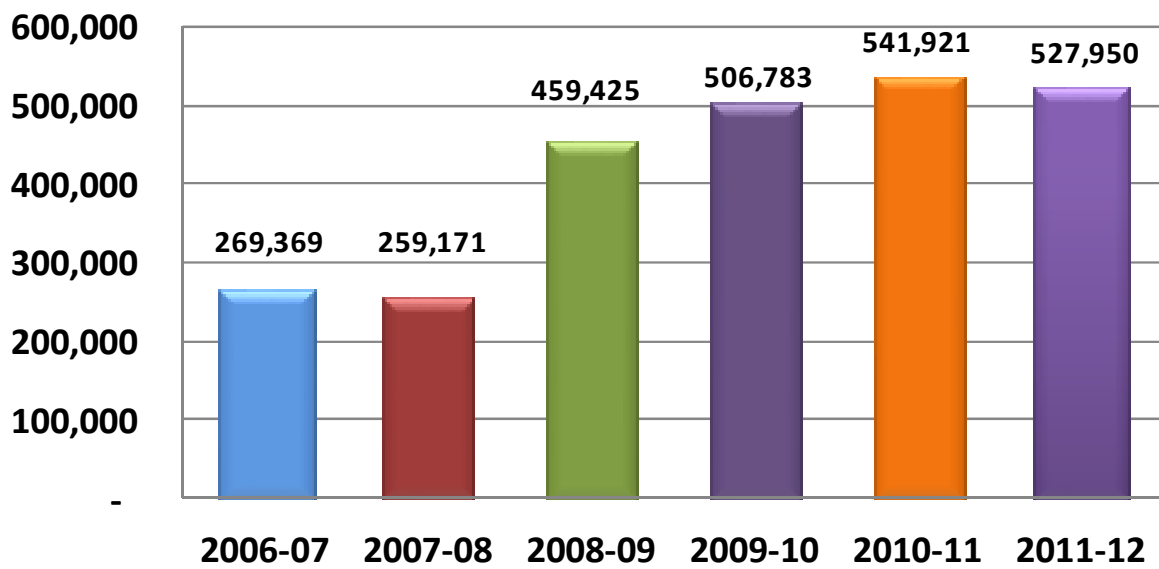


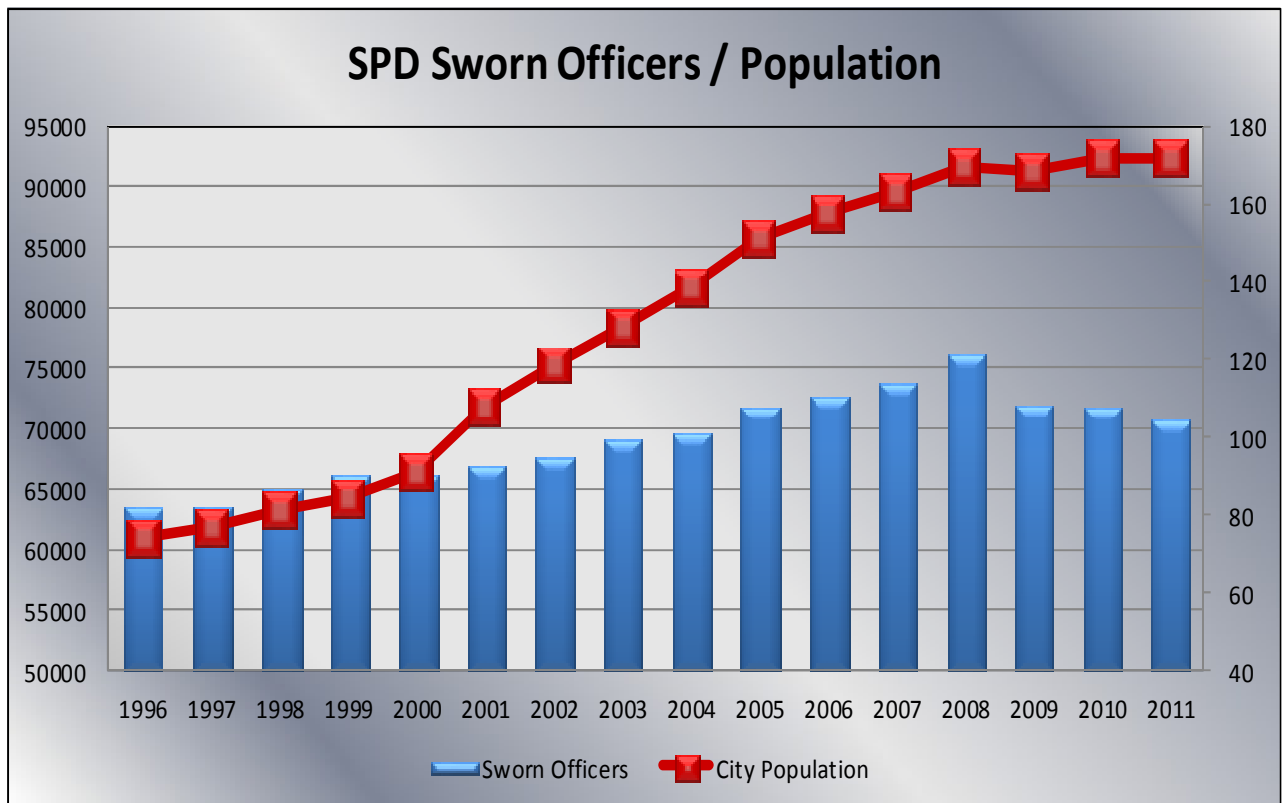
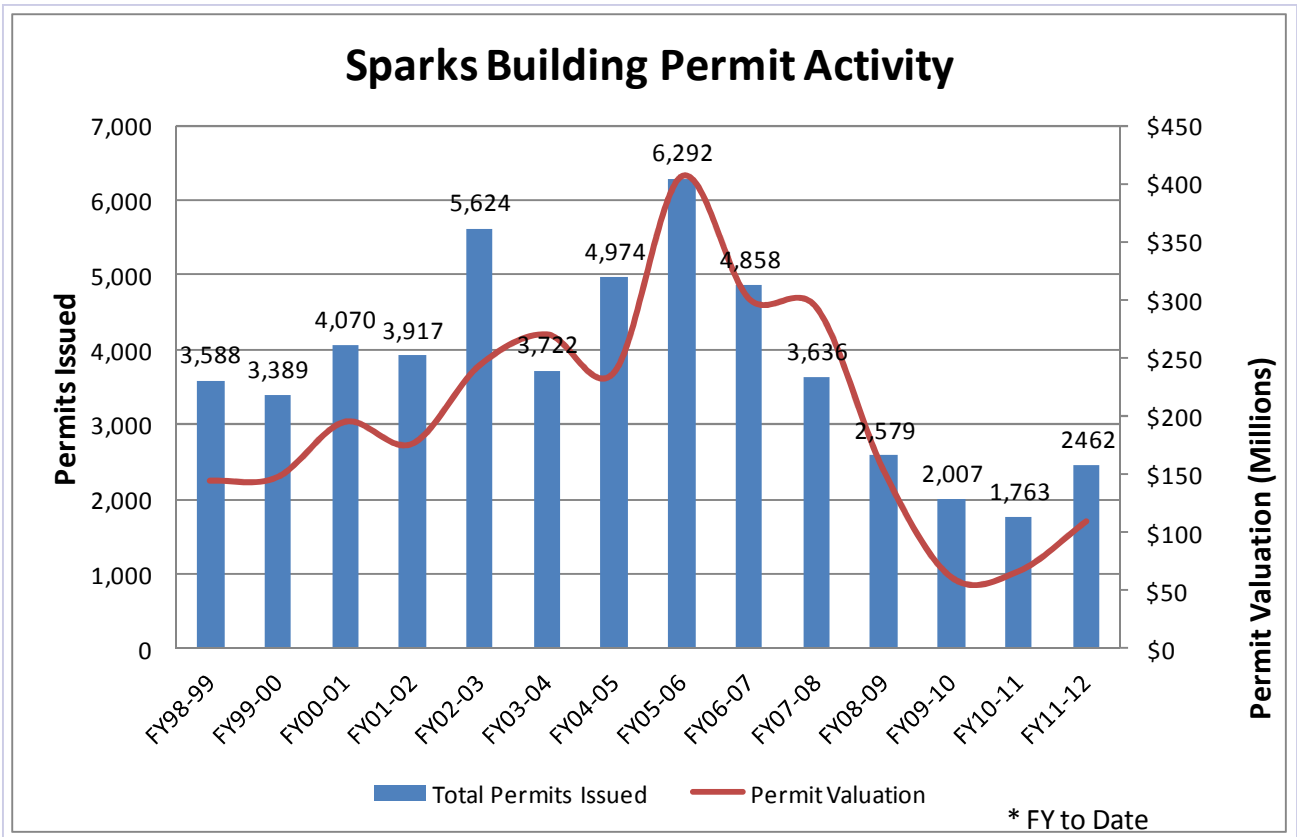


### Citizen Rating (Excellent/Good) Overall Satisfaction with Park and Recreation

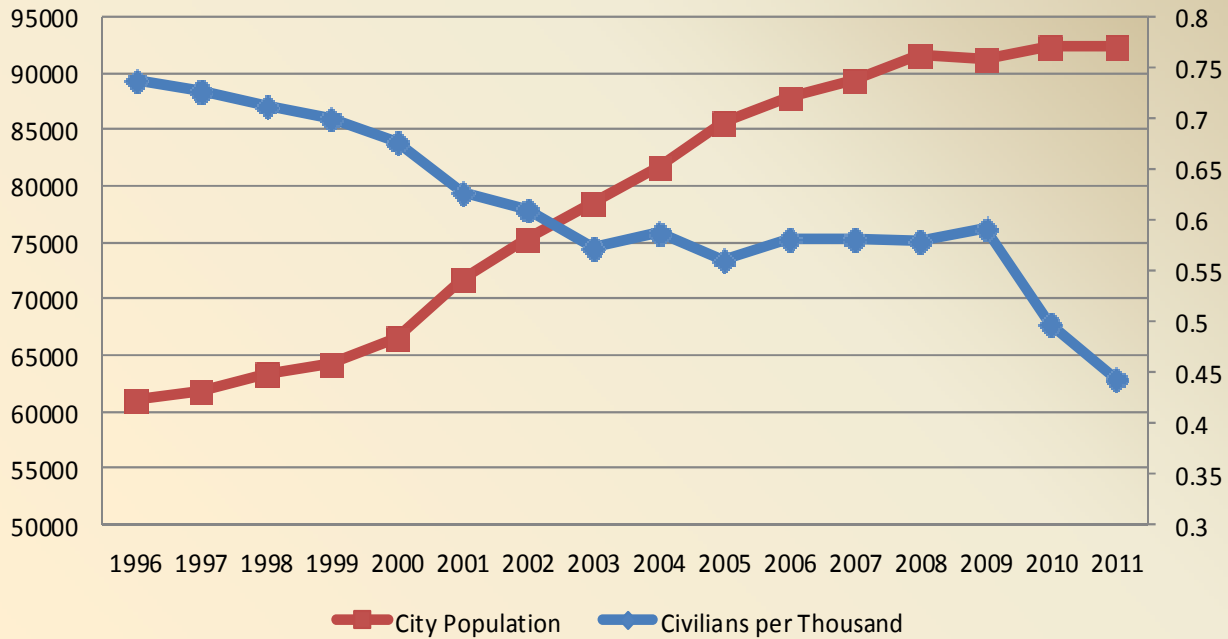


### Parks & Recreation Revenue Received from Endowments, Grants & Foundations

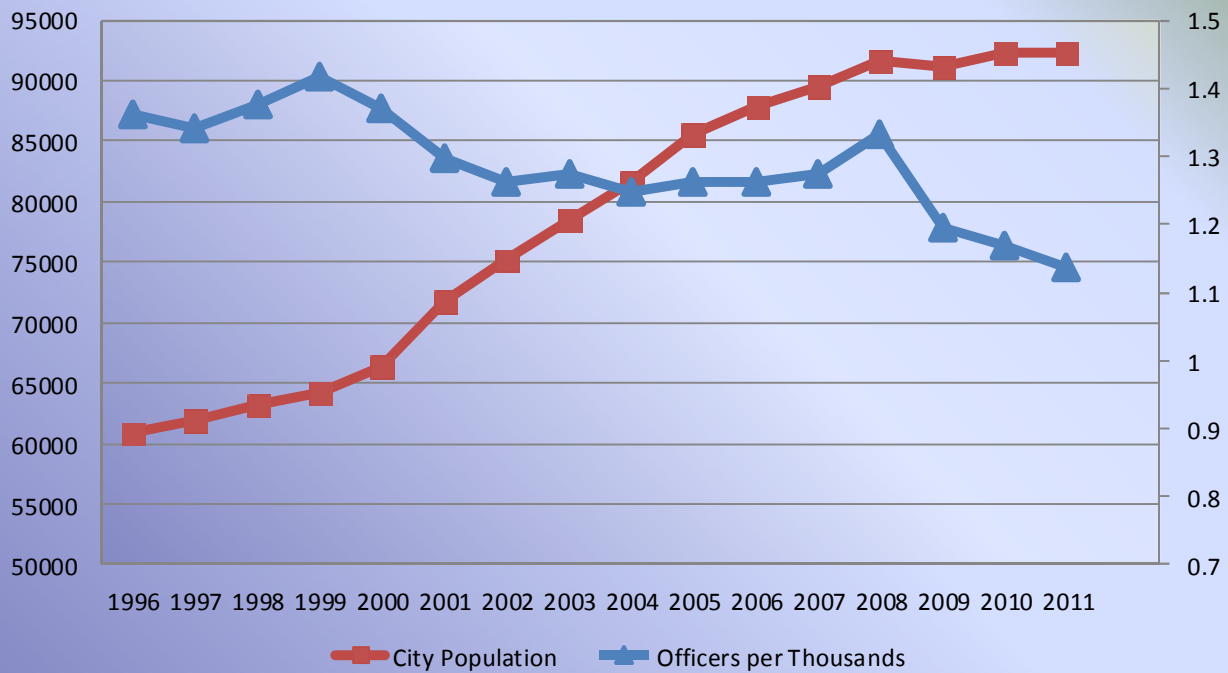




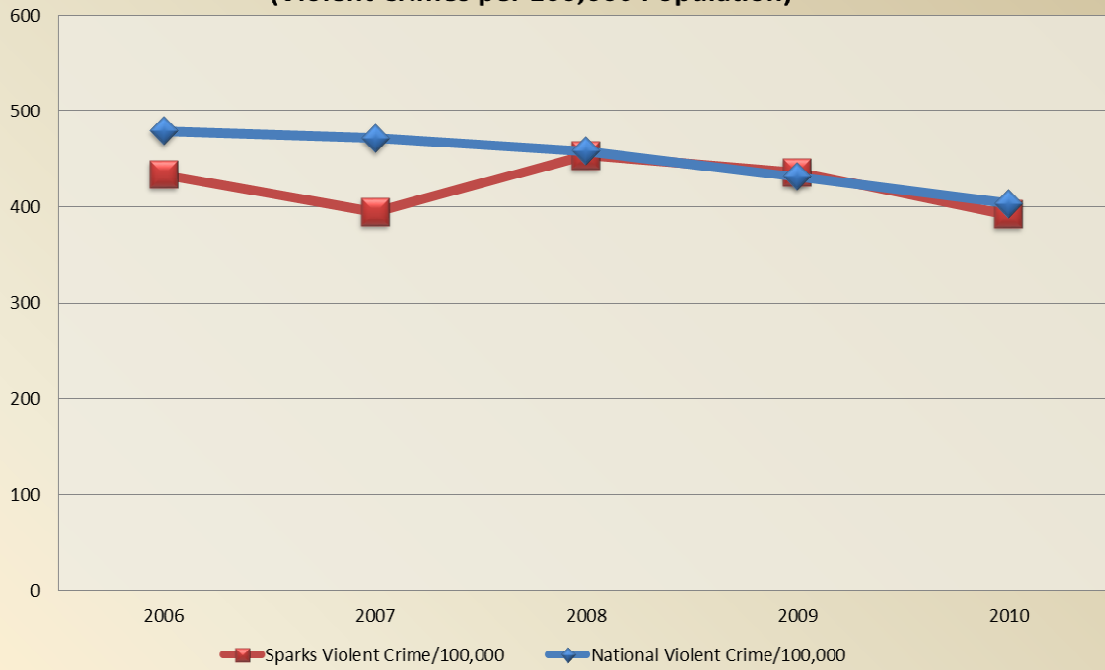
### Population - Civilian Employees per 1,000 Population



### Population - Sworn Officers per 1,000 Population

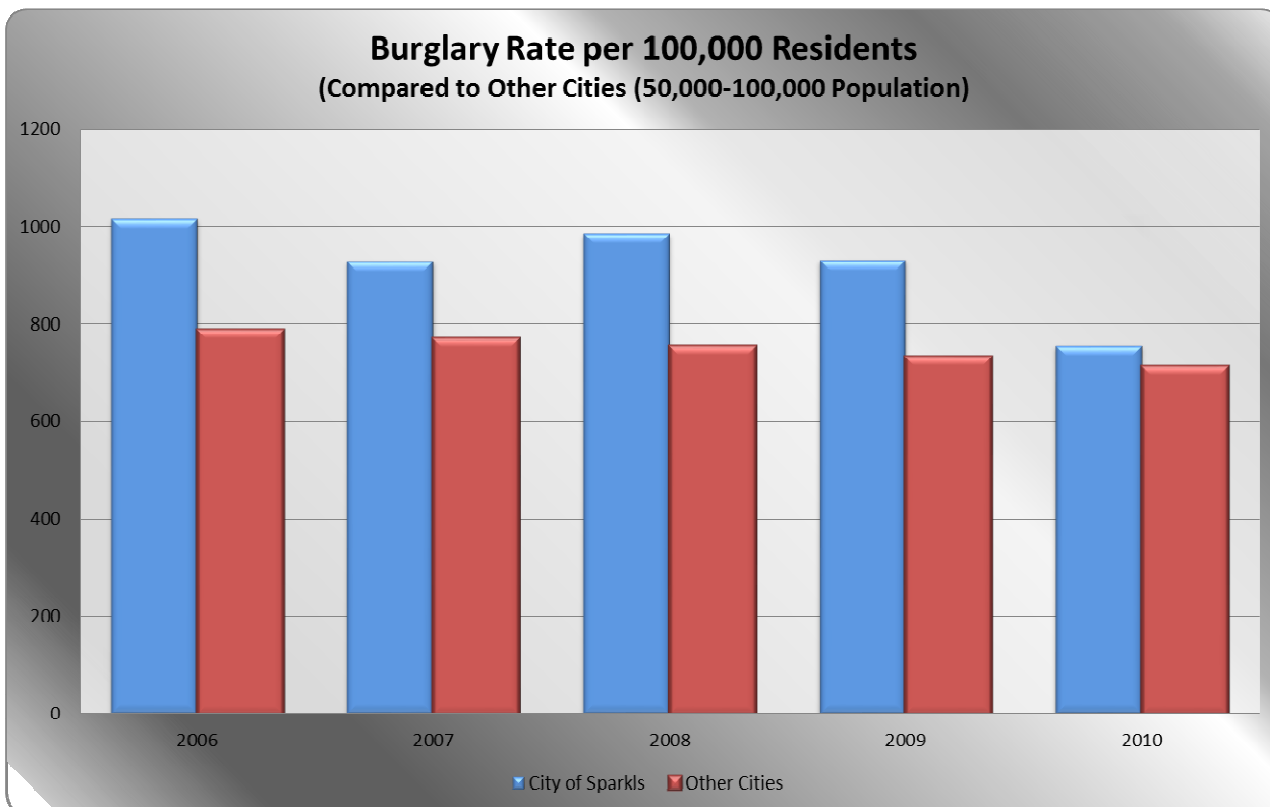
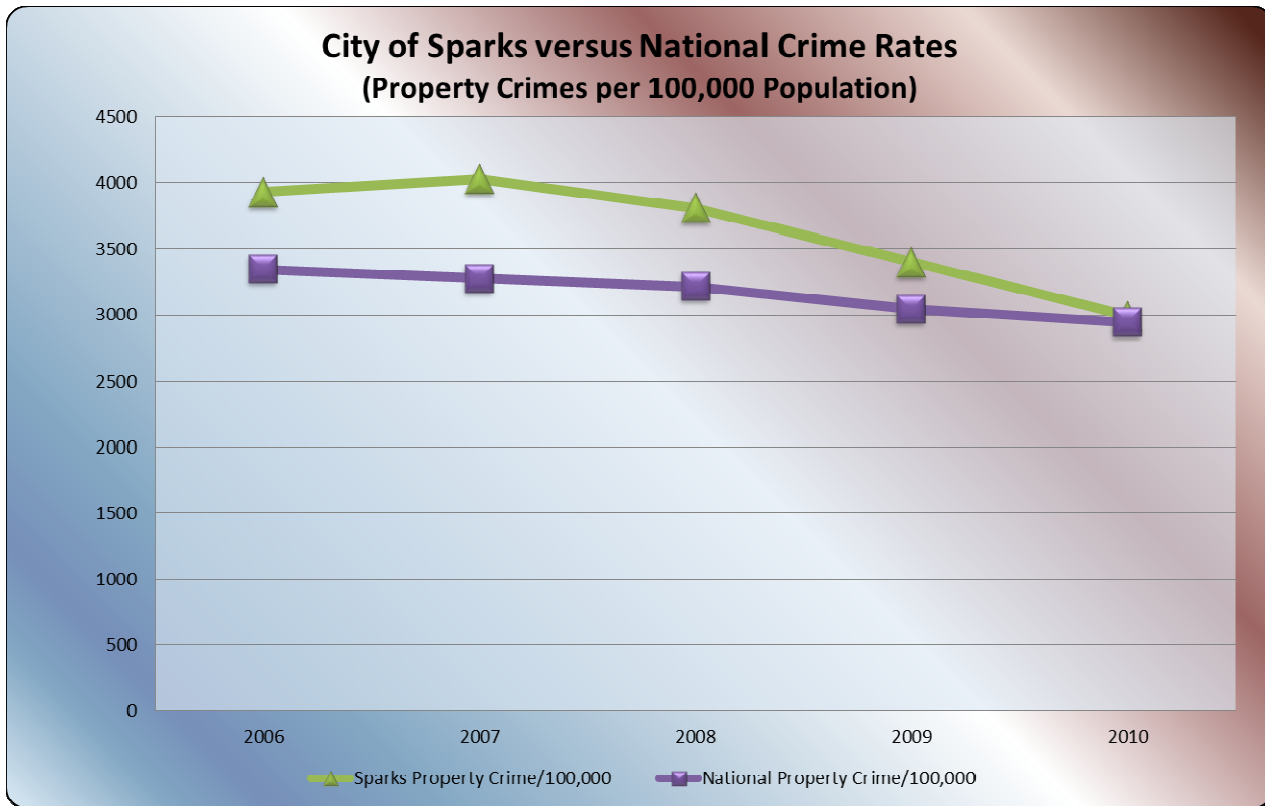


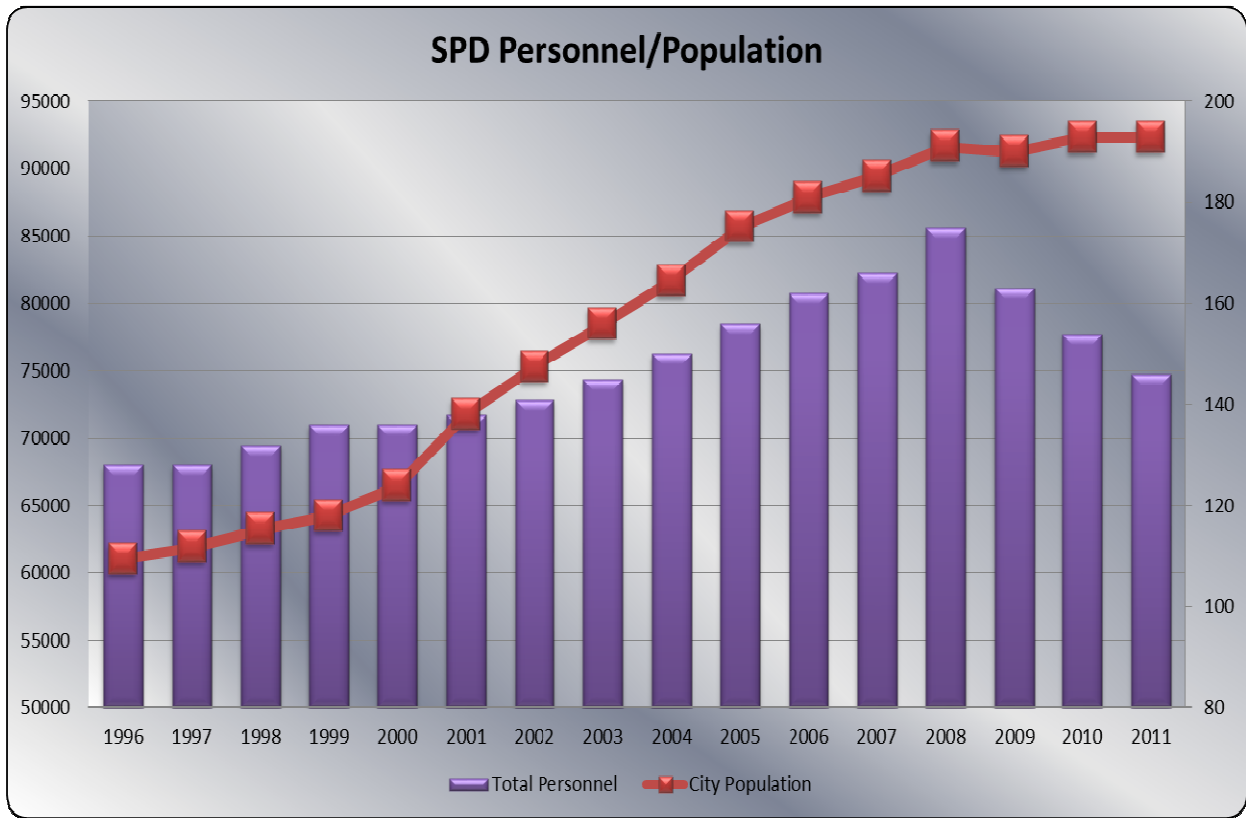
**City of Sparks versus National Crime Rates  
(Violent Crimes per 100,000 Population)**

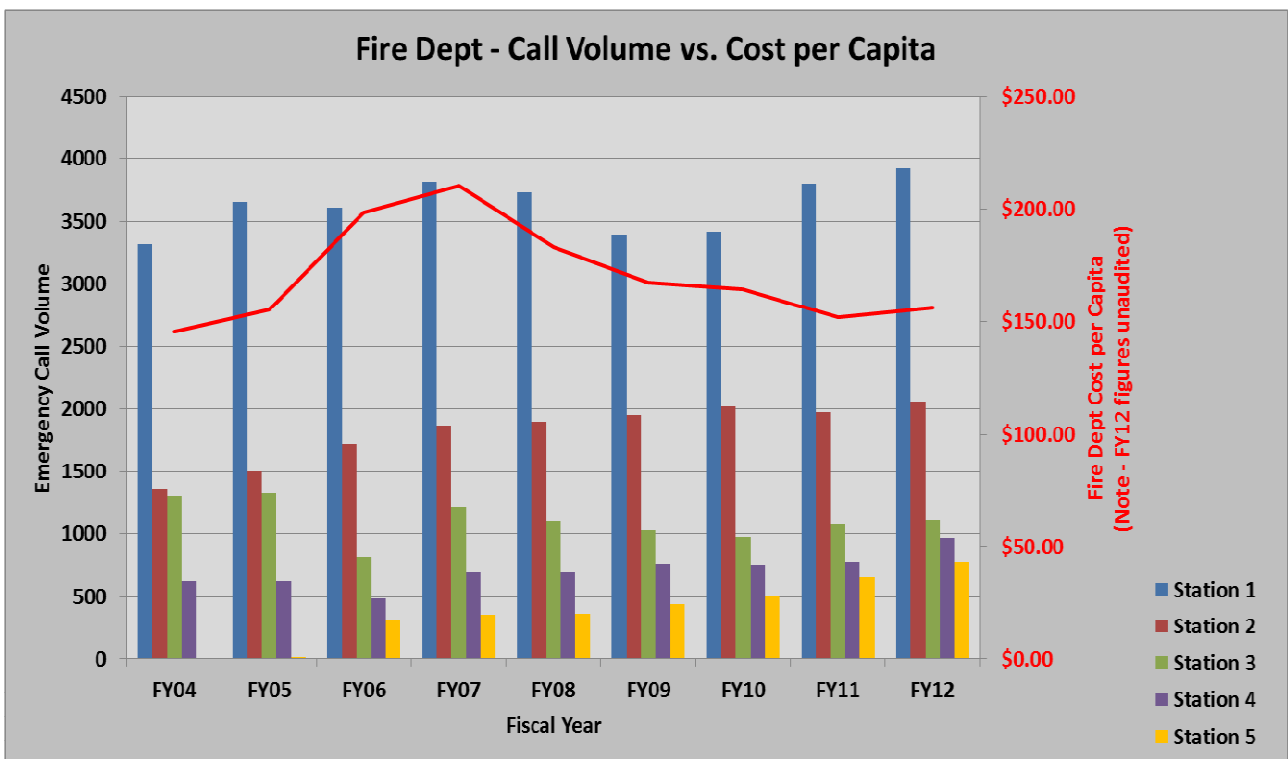
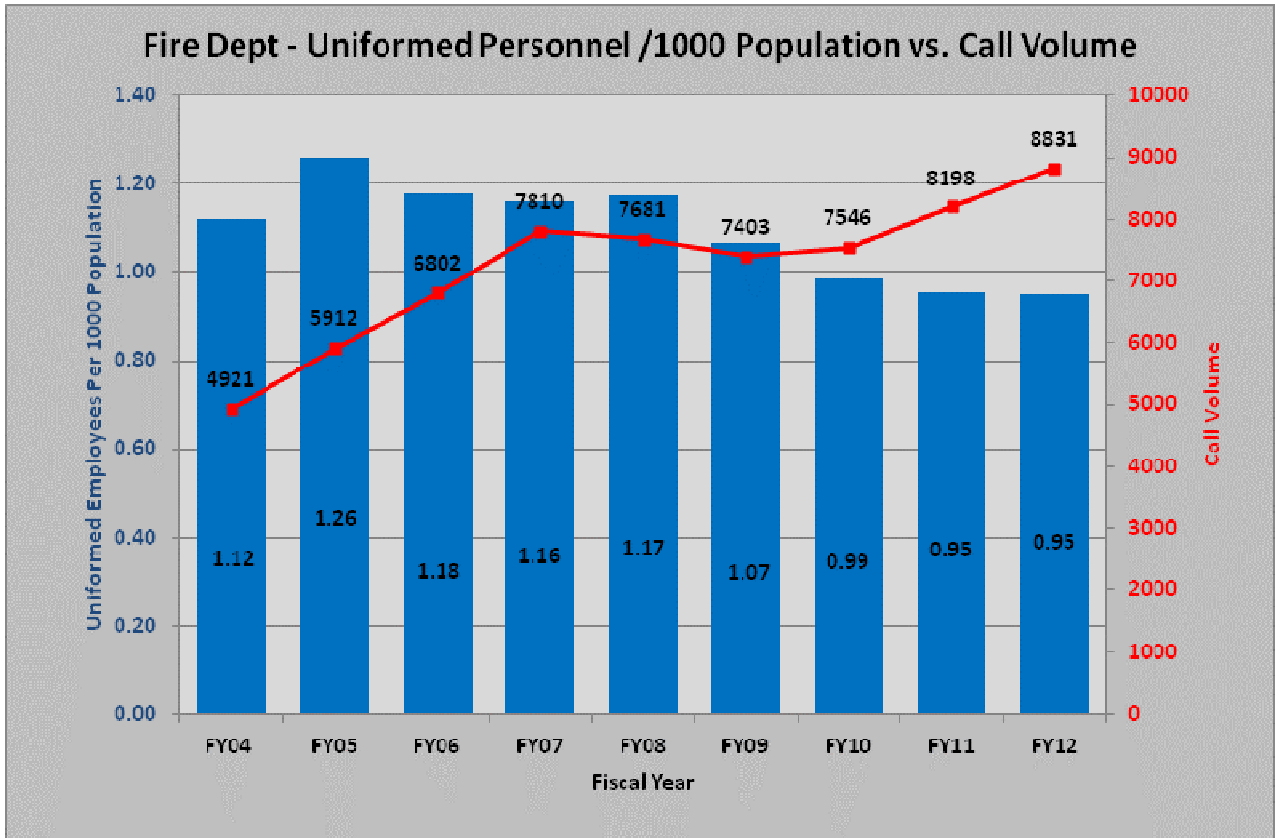


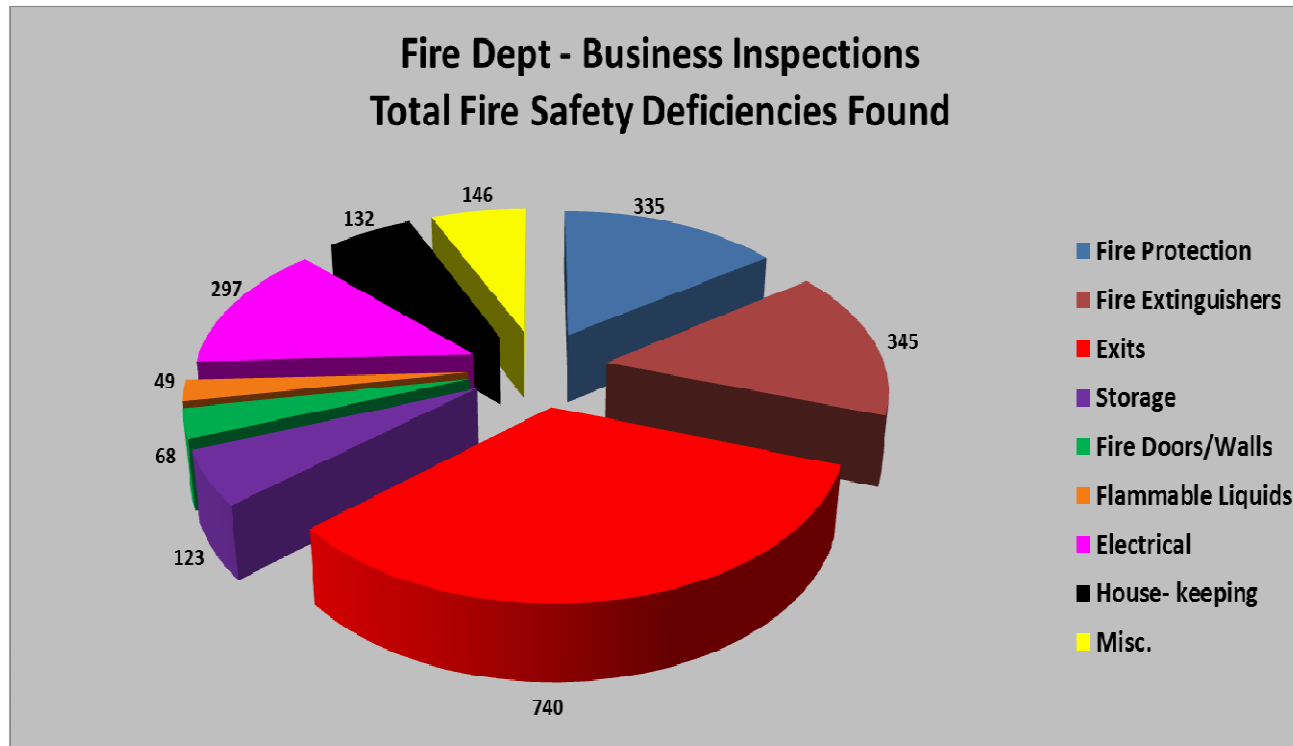
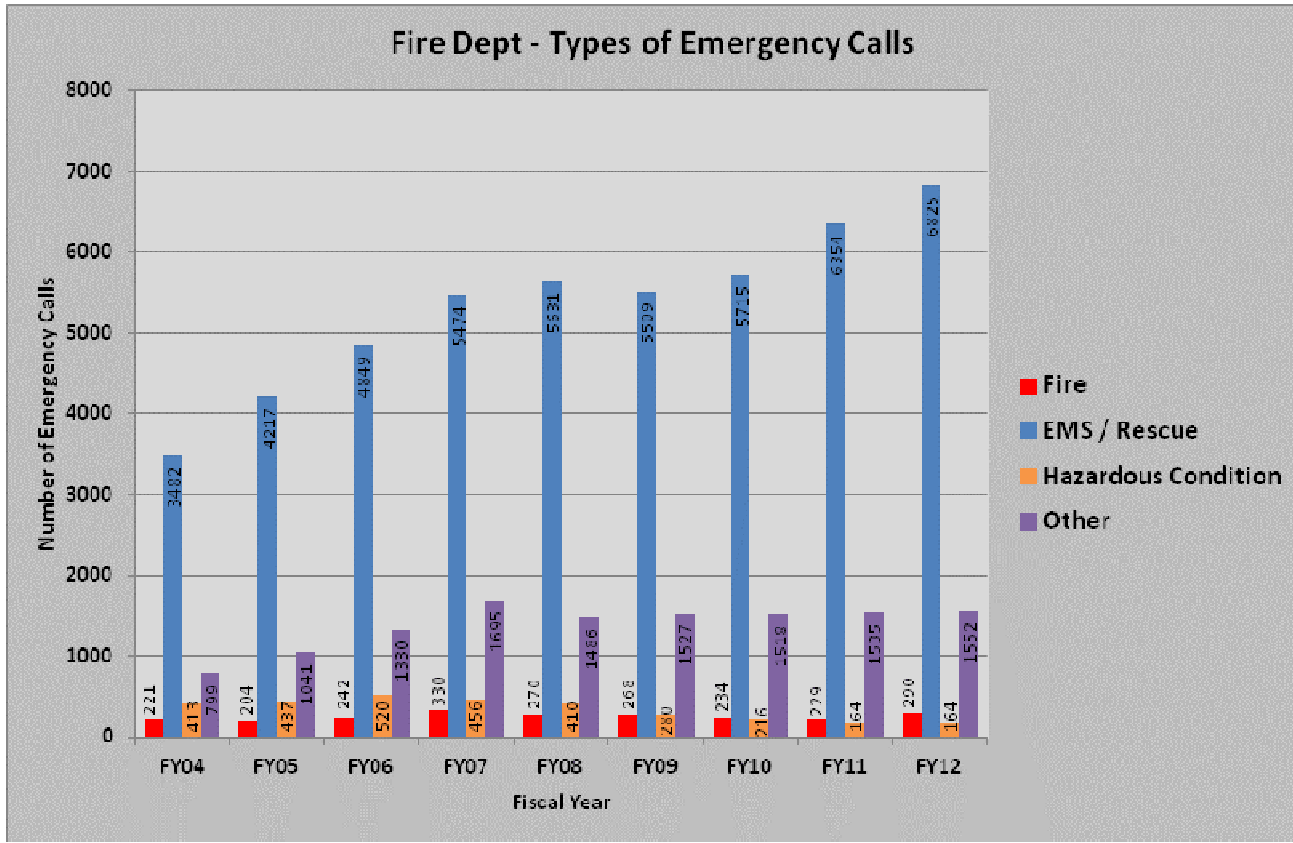
**Rape Rate per 100,000 Residents  
(Compared to Other Cities (50,000-100,000 Population))**













**Mayor Geno Martini**

**City Council**

**Julia Ratti, Ward 1**

**Ed Lawson, Ward 2**

**Ron Smith, Ward 3**

**Mike Carrigan, Ward 4**

**Ron Schmitt, Ward 5**

**City Attorney**

**Chet Adams**

**Municipal Judges**

**Judge Barbara McCarthy**

**Judge Jim Spoo**

**City Manager**

**Shaun Carey**

**Assistant City Manager**

**Steve Driscoll**

**Senior Staff**

**Andy Flock, Fire Chief**

**Steve Keefer, Police Chief**

**Neil Krutz, Dep City Manager**

**Jeff Cronk, Finance Director**

**Tracy Domingues, Parks & Rec Director**

**Linda Patterson, City Clerk**

